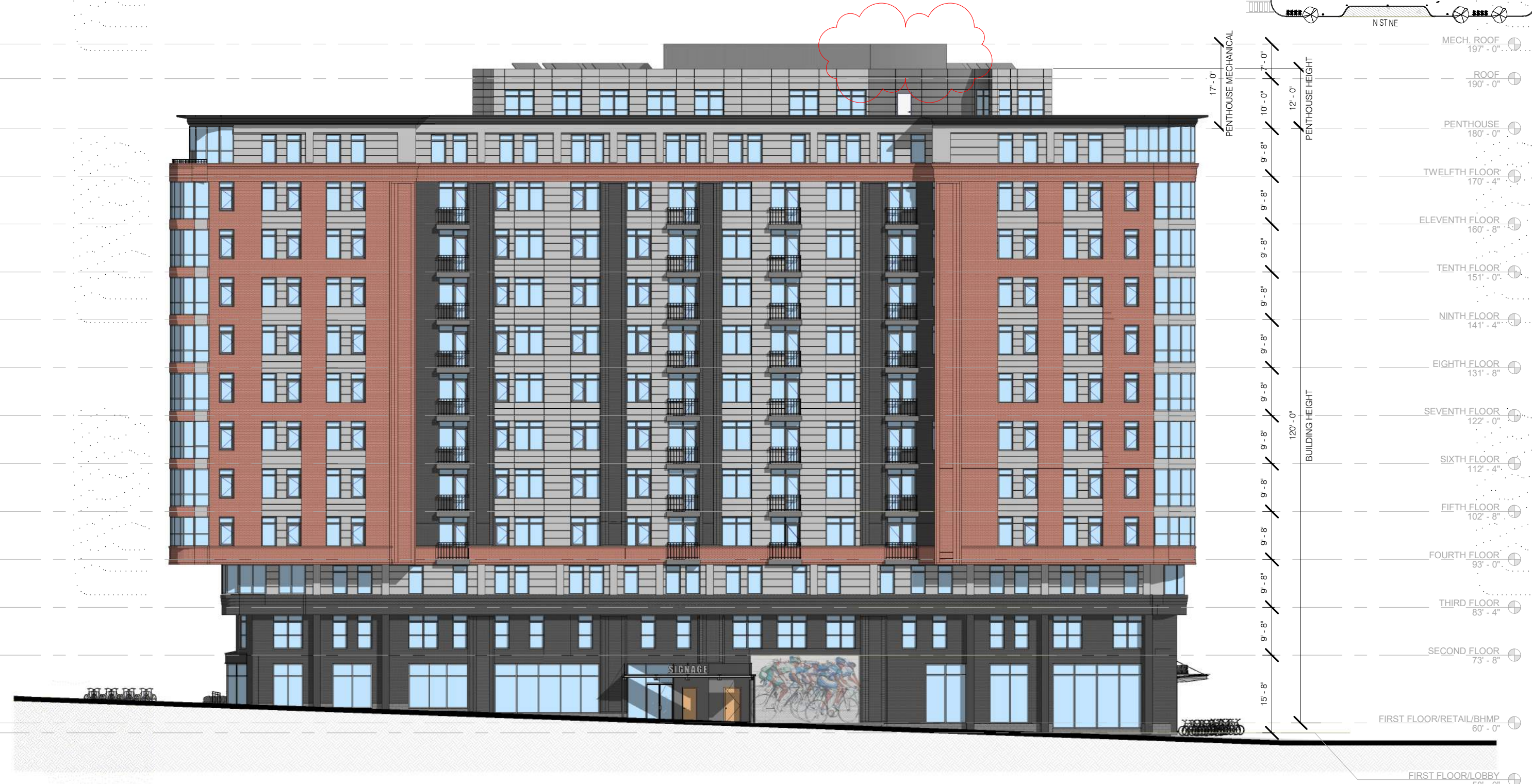
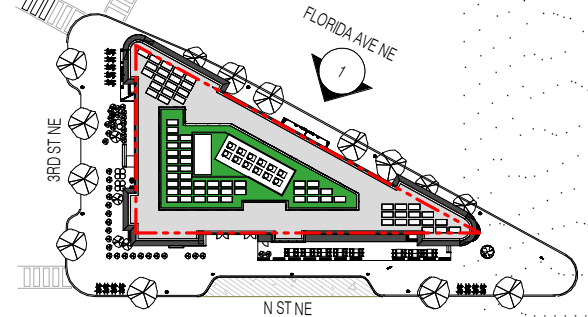


1. Flexibility is requested to vary the final selection of the exterior materials within the color ranges and material types as proposed without reducing the quality of the materials and to make minor refinements to exterior details and dimensions.
2. Flexibility is requested to vary the approved signage provided it is consistent with the indicated dimensions and materials
3. Flexibility is requested to vary the non-residential storefront and associated features and fixtures in public space subject to individual tenant modifications
4. Flexibility is requested to vary exterior ornamentation based on comments from National Park Service



① Florida Ave Elevation
1" = 20'-0"



SCALE 1"=20'-0"

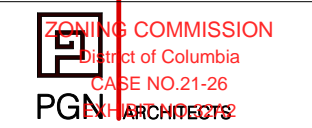
NoMA/Union Market Affordable

301 Florida Ave NE, Washington, DC 20002

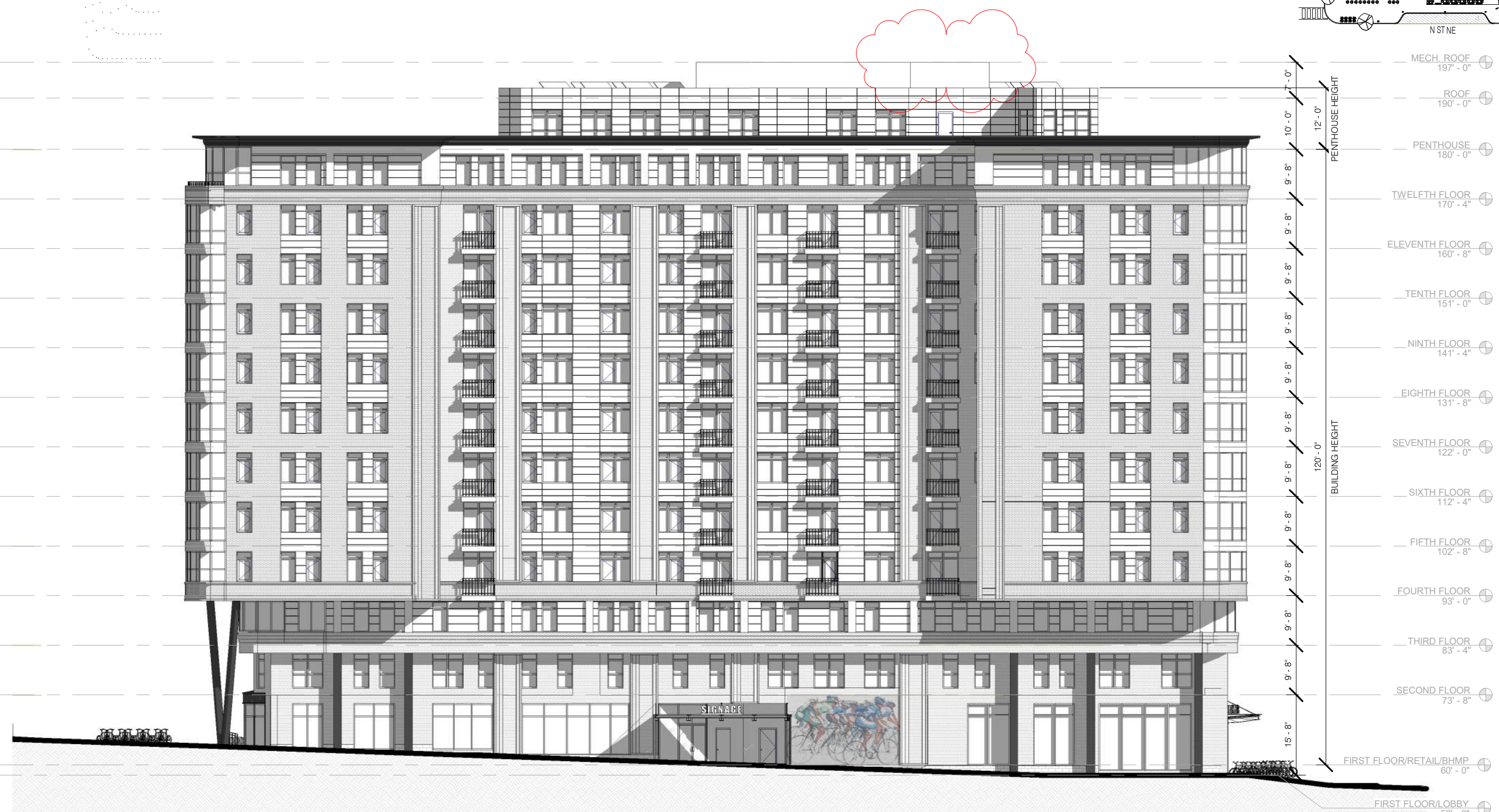
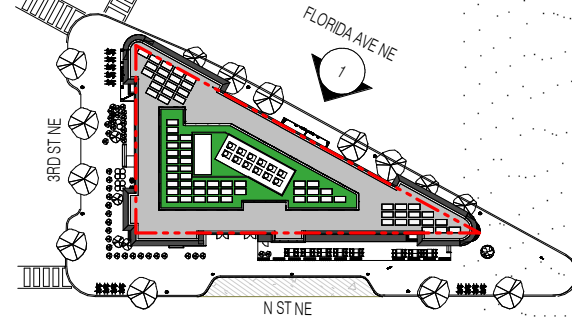
FLORIDA AVE ELEVATION | A.21

COPYRIGHT © 2020 PGN ARCHITECTS, PLLC

08/22/2022



1. Flexibility is requested to vary the final selection of the exterior materials within the color ranges and material types as proposed without reducing the quality of the materials and to make minor refinements to exterior details and dimensions.
2. Flexibility is requested to vary the approved signage provided it is consistent with the indicated dimensions and materials
3. Flexibility is requested to vary the non-residential storefront and associated features and fixtures in public space subject to individual tenant modifications
4. Flexibility is requested to vary exterior ornamentation based on comments from National Park Service



① Florida Ave Elevation BW
1" = 20'-0"

NoMA/Union Market Affordable

301 Florida Ave NE, Washington, DC 20002

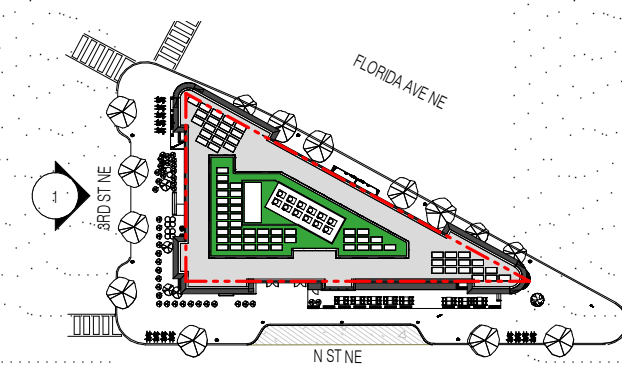
FLORIDA AVE ELEVATION BW | A.21A

COPYRIGHT © 2020 PGN ARCHITECTS, PLLC

08/22/2022



1. Flexibility is requested to vary the final selection of the exterior materials within the color ranges and material types as proposed without reducing the quality of the materials and to make minor refinements to exterior details and dimensions.
2. Flexibility is requested to vary the approved signage provided it is consistent with the indicated dimensions and materials
3. Flexibility is requested to vary the non-residential storefront and associated features and fixtures in public space subject to individual tenant modifications
4. Flexibility is requested to vary exterior ornamentation based on comments from National Park Service



① Third St Elevation
1" = 20'-0"

NoMA/Union Market Affordable

301 Florida Ave NE, Washington, DC 20002

COPYRIGHT © 2020 PGN ARCHITECTS, PLLC



0 10' 20' 40'
SCALE 1"=20'-0"
3RD ST. ELEVATION | A.22

08/22/2022



1. Flexibility is requested to vary the final selection of the exterior materials within the color ranges and material types as proposed without reducing the quality of the materials and to make minor refinements to exterior details and dimensions.
2. Flexibility is requested to vary the approved signage provided it is consistent with the indicated dimensions and materials
3. Flexibility is requested to vary the non-residential storefront and associated features and fixtures in public space subject to individual tenant modifications
4. Flexibility is requested to vary exterior ornamentation based on comments from National Park Service



1 Third St Elevation BW
1" = 20'-0"

NoMA/Union Market Affordable

301 Florida Ave NE, Washington, DC 20002

COPYRIGHT © 2020 PGN ARCHITECTS, PLLC

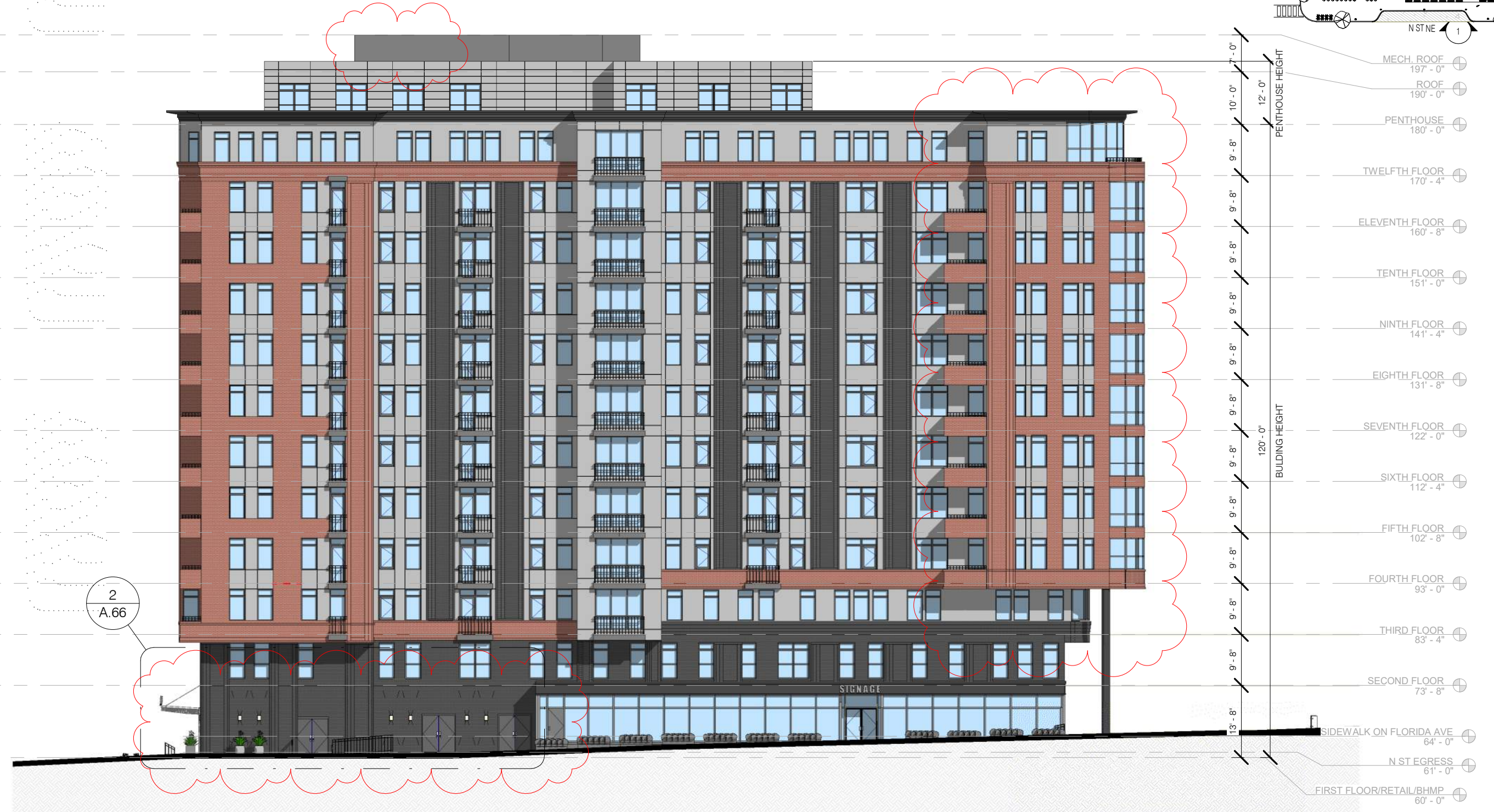
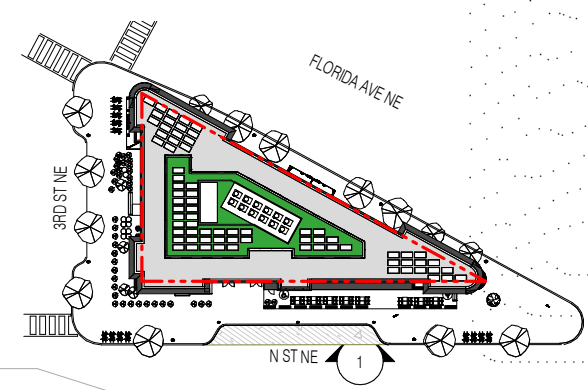


3RD ST. ELEVATION BW | A.22A

08/22/2022



1. Flexibility is requested to vary the final selection of the exterior materials within the color ranges and material types as proposed without reducing the quality of the materials and to make minor refinements to exterior details and dimensions.
2. Flexibility is requested to vary the approved signage provided it is consistent with the indicated dimensions and materials
3. Flexibility is requested to vary the non-residential storefront and associated features and fixtures in public space subject to individual tenant modifications
4. Flexibility is requested to vary exterior ornamentation based on comments from National Park Service



① N ST Elevation
1" = 20'-0"

NoMA/Union Market Affordable

301 Florida Ave NE, Washington, DC 20002

COPYRIGHT © 2020 PGN ARCHITECTS, PLLC



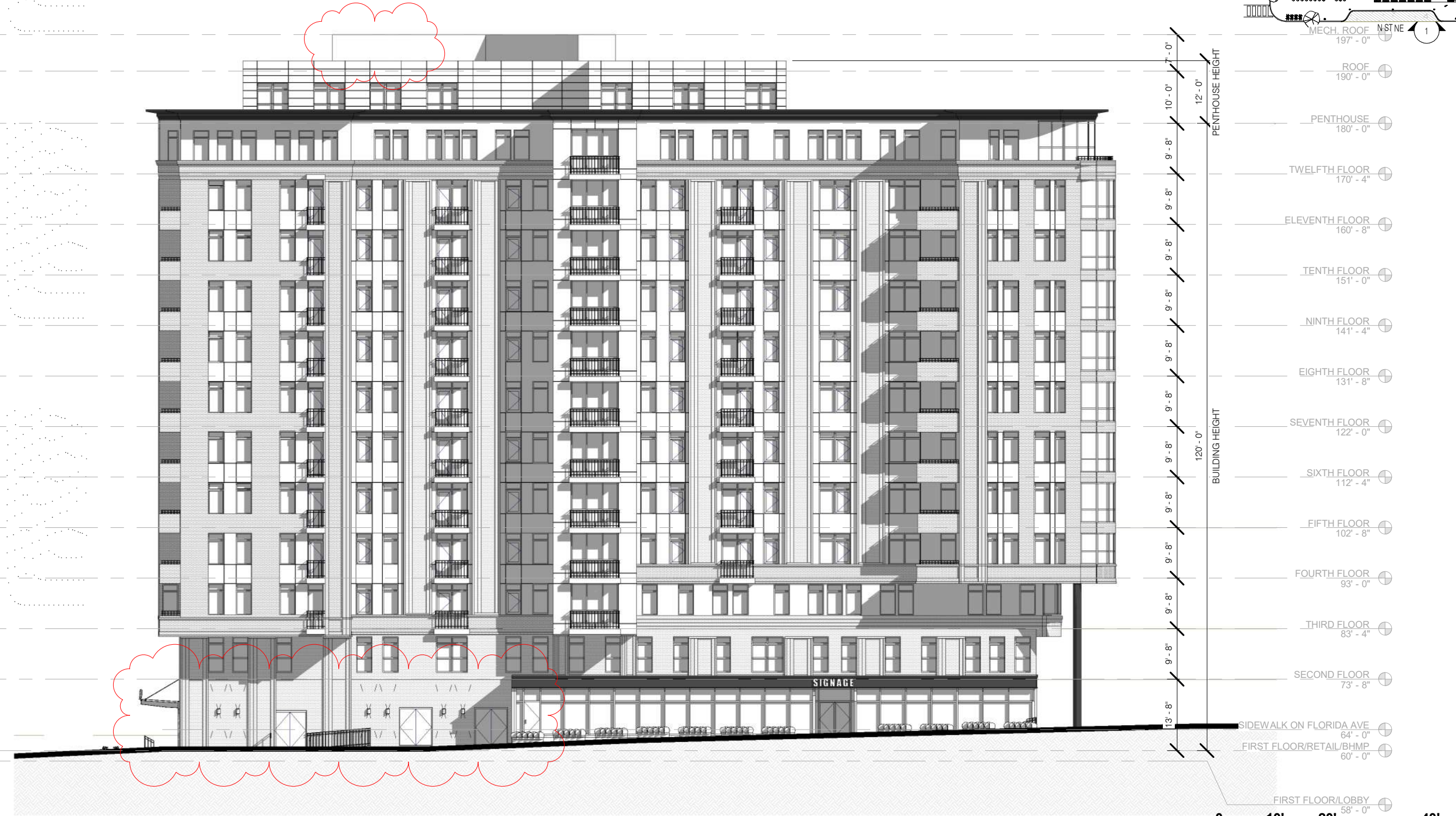
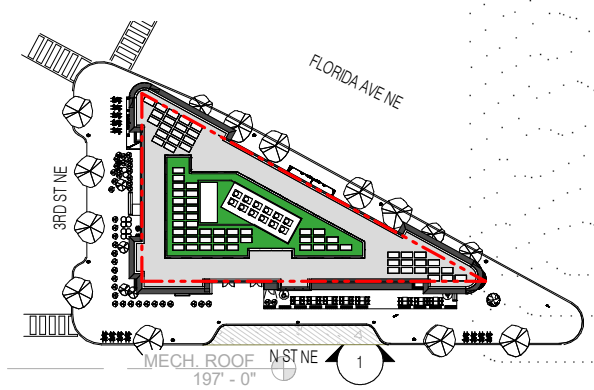
0 10' 20' 40'

SCALE 1"=20'-0"

N ST. ELEVATION A.23

08/22/2022

1. Flexibility is requested to vary the final selection of the exterior materials within the color ranges and material types as proposed without reducing the quality of the materials and to make minor refinements to exterior details and dimensions.
2. Flexibility is requested to vary the approved signage provided it is consistent with the indicated dimensions and materials
3. Flexibility is requested to vary the non-residential storefront and associated features and fixtures in public space subject to individual tenant modifications
4. Flexibility is requested to vary exterior ornamentation based on comments from National Park Service



① N ST Elevation BW
1" = 20'-0"



SCALE 1"=20'-0"

NoMA/Union Market Affordable

301 Florida Ave NE, Washington, DC 20002

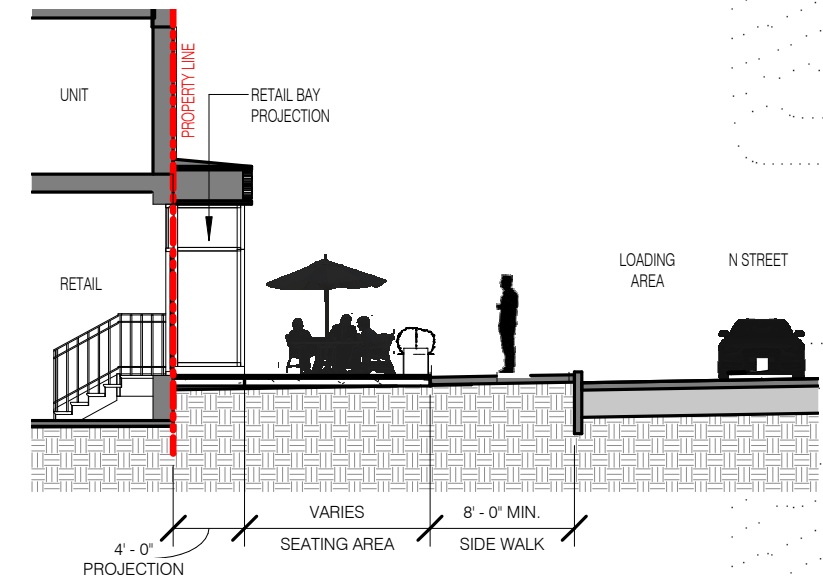
N ST. ELEVATION BW | A.23A

08/22/2022

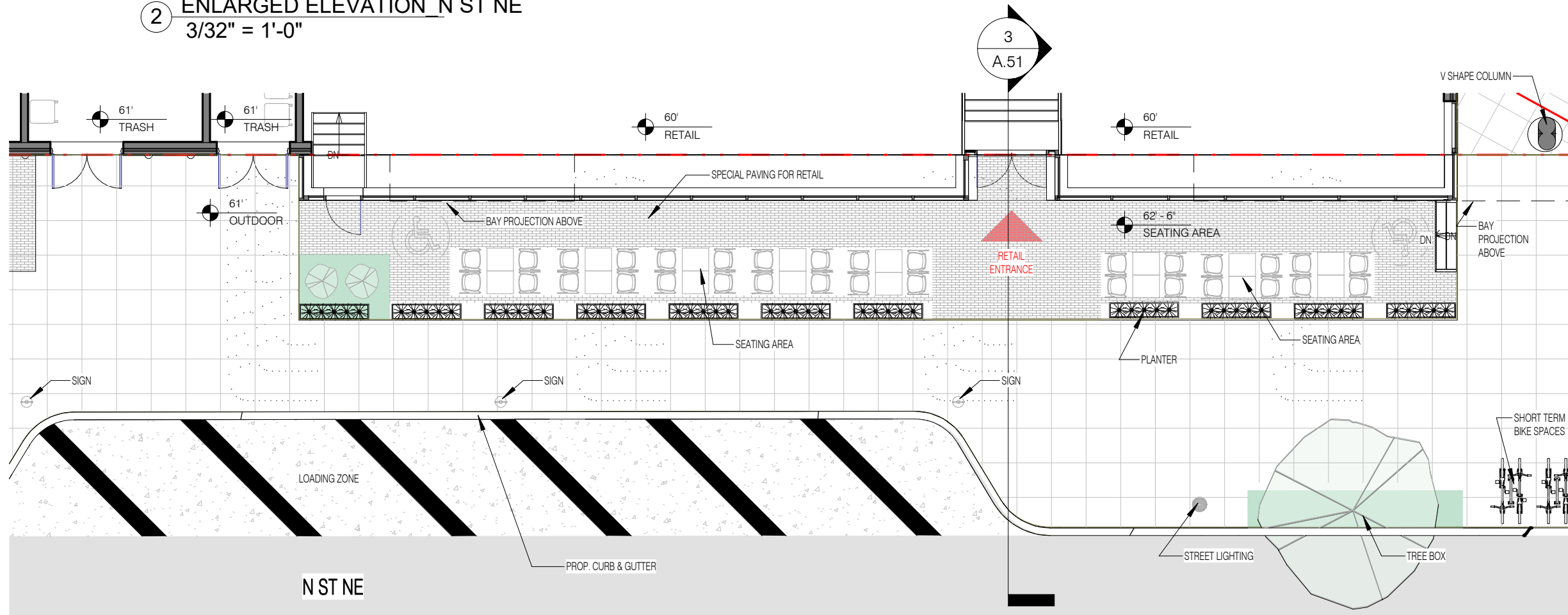




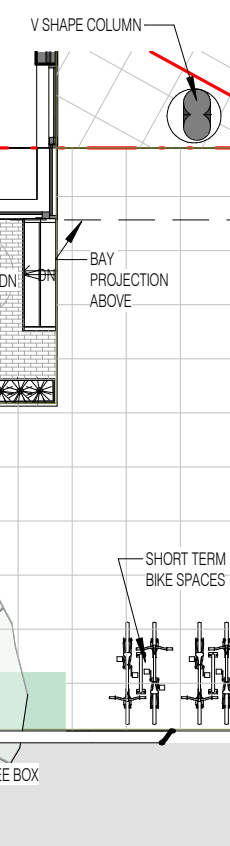
2 ENLARGED ELEVATION N ST NE
3/32" = 1'-0"



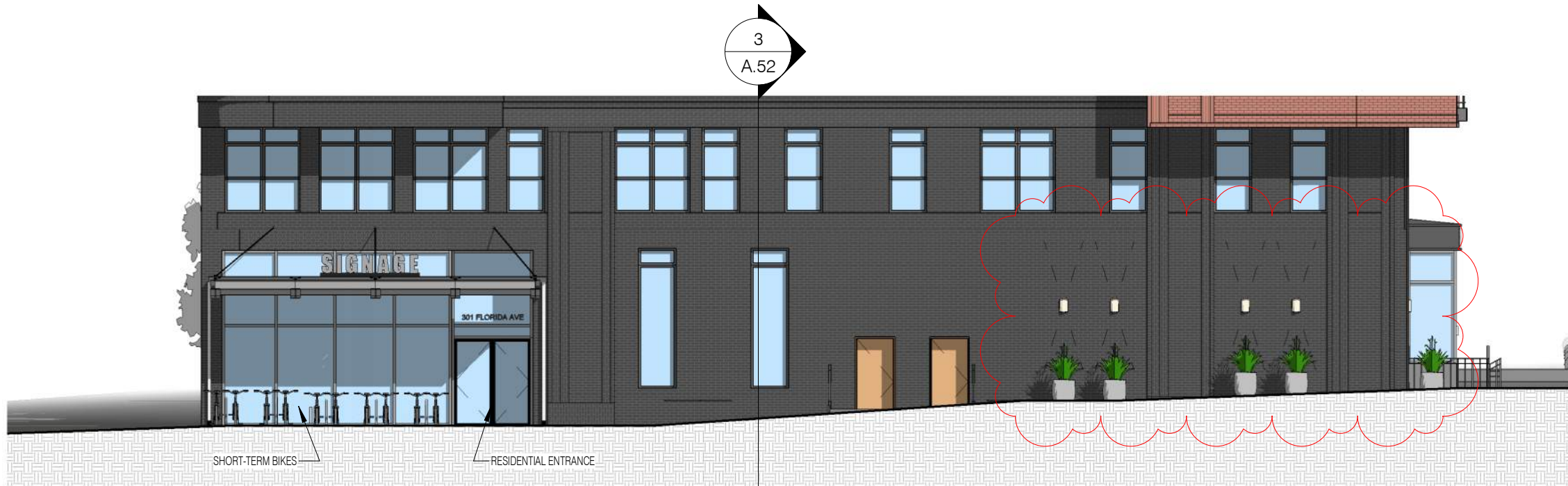
3 ENLARGED SECTION N ST NE
3/32" = 1'-0"



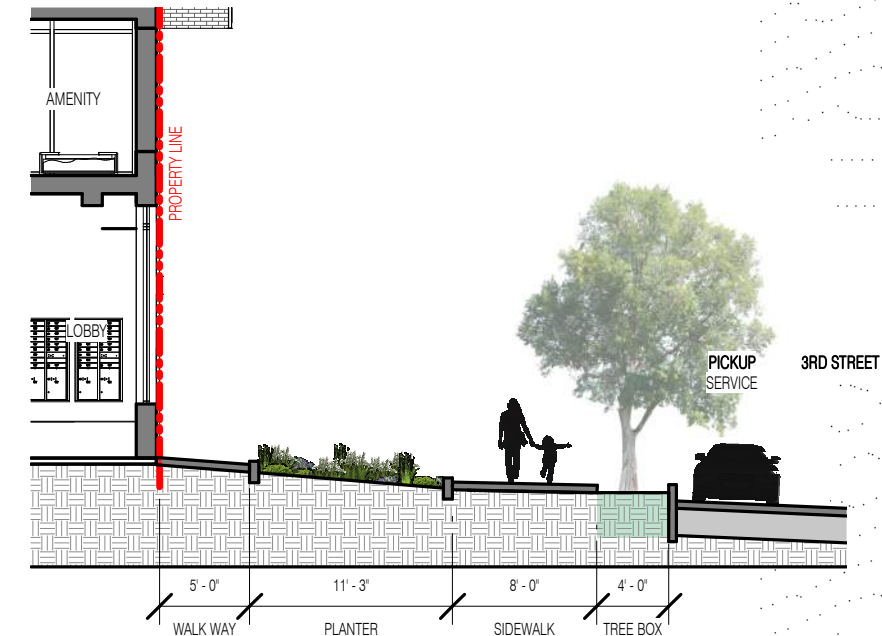
1 STREETSCAPE - N ST NE
3/32" = 1'-0"



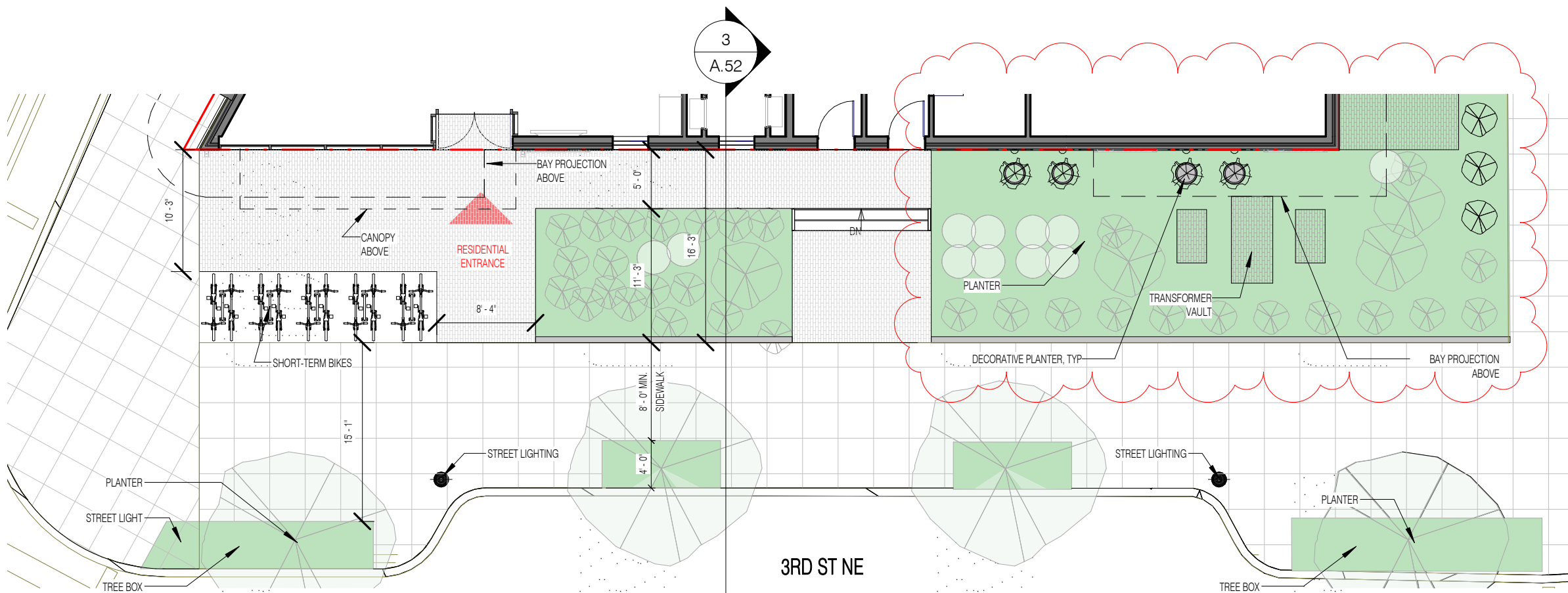
1. Flexibility is requested to vary the location, attributes, and general design of the approved streetscape to comply with the requirements of and approval by the DDOT Public Space Division.



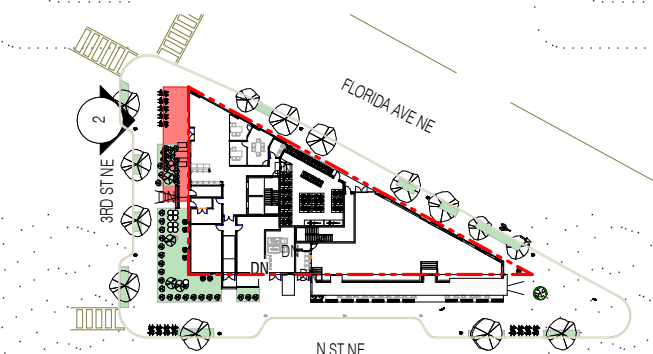
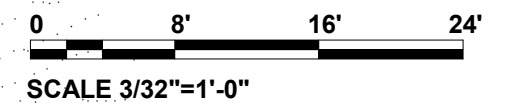
2 ENLARGED ELEVATION - 3RD ST
3/32" = 1'-0"



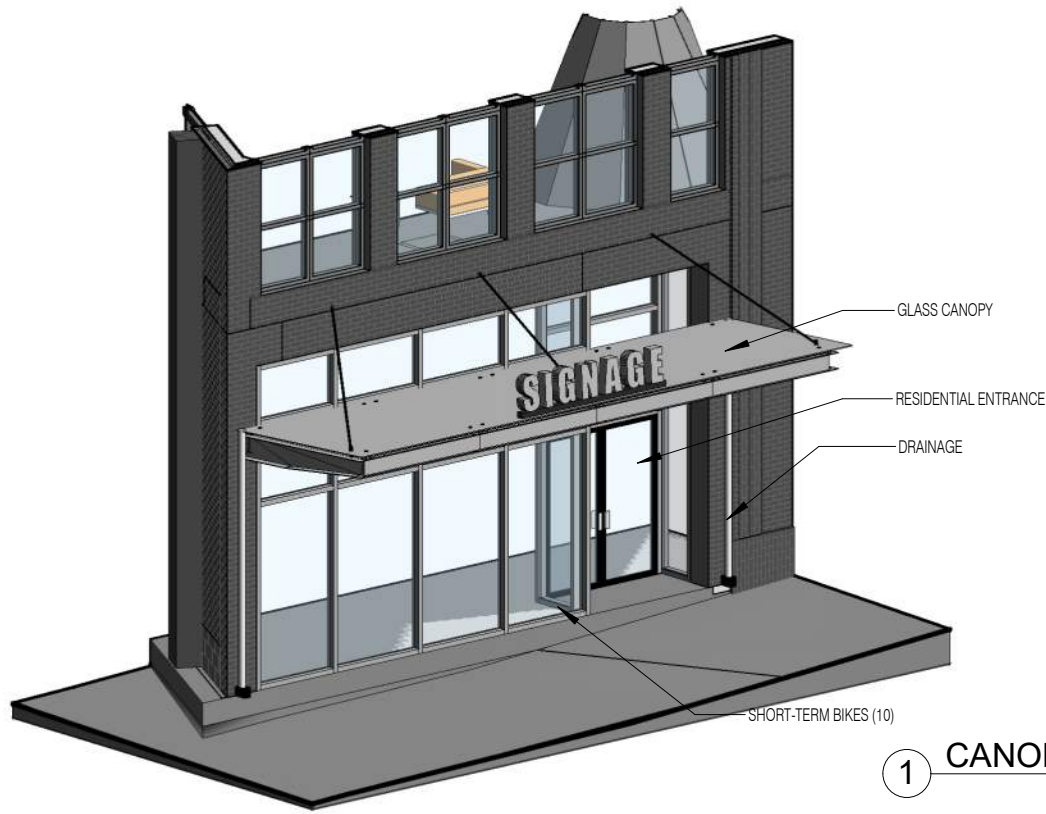
3 ENLARGED SECTION 3RD
3/32" = 1'-0"



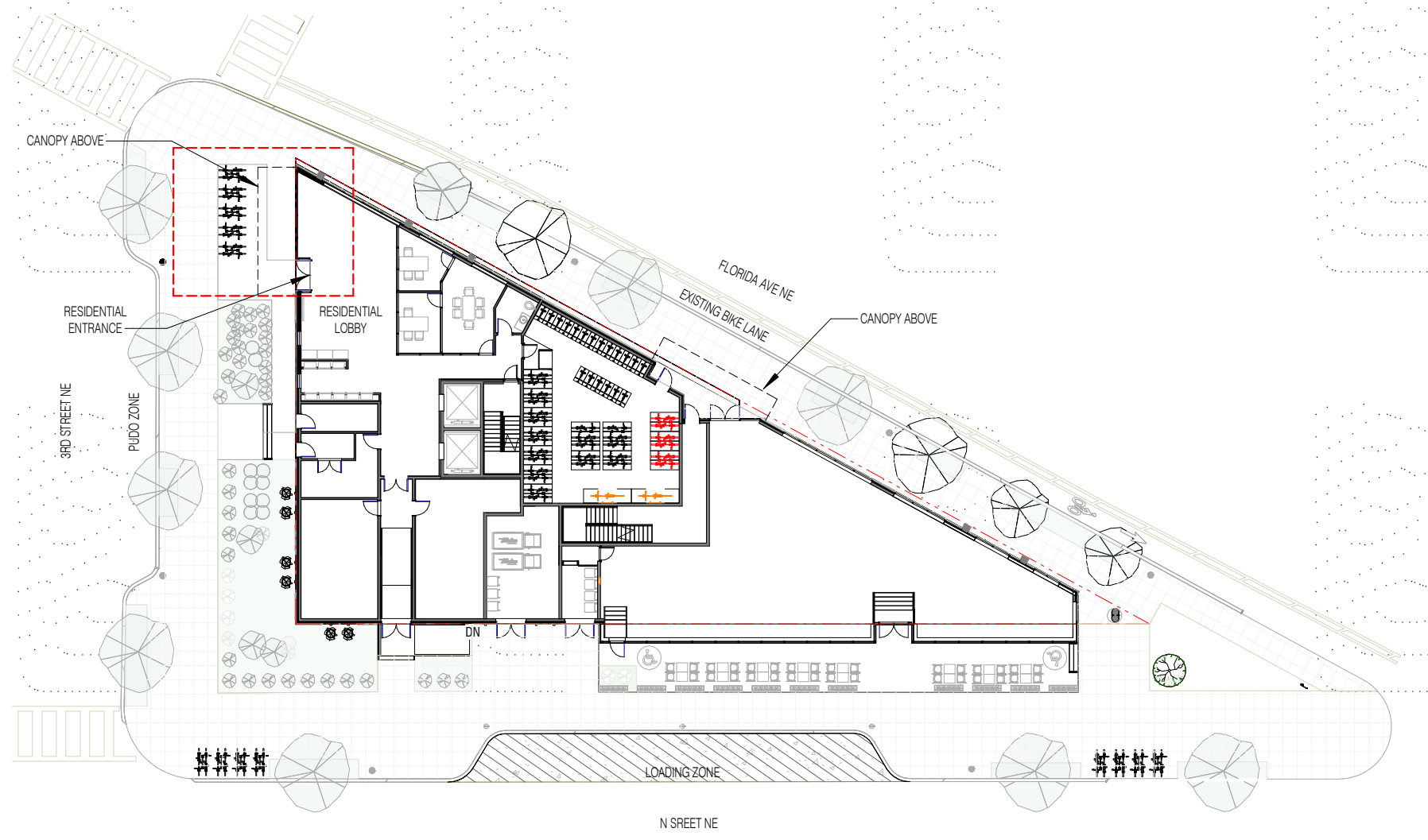
1 STREETScape - 3RD ST NE
3/32" = 1'-0"



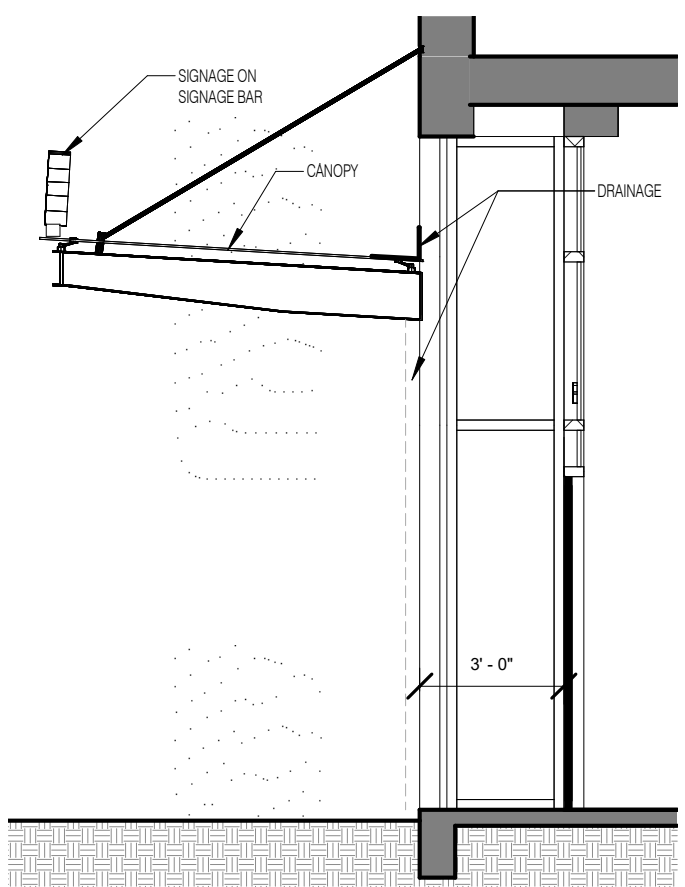
1. Flexibility is requested to vary the location, attributes, and general design of the approved streetscape to comply with the requirements of and approval by the DDOT Public Space Division.



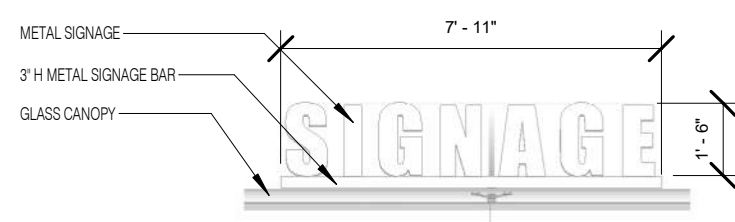
1 CANOPY 1 3D View 1



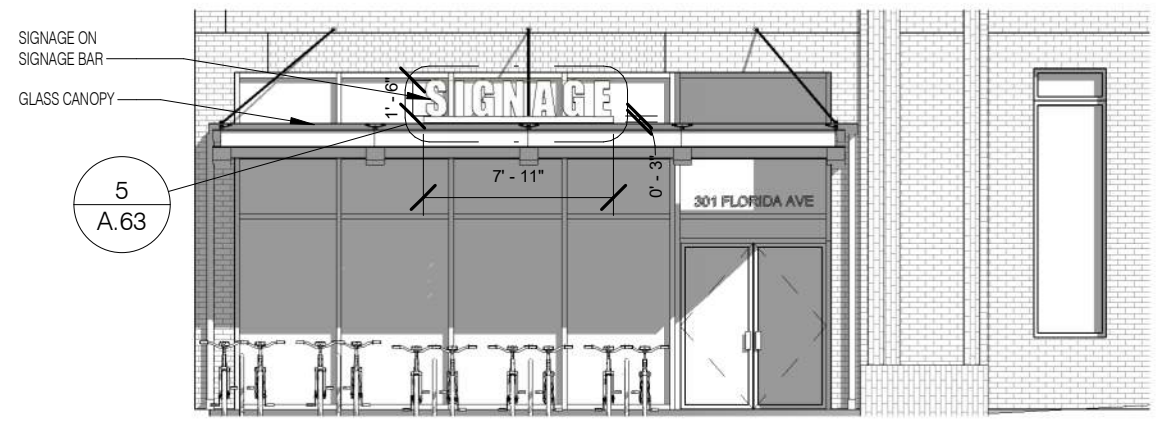
2 CANOPY 1 PLAN LOCATION
1/32" = 1'-0"



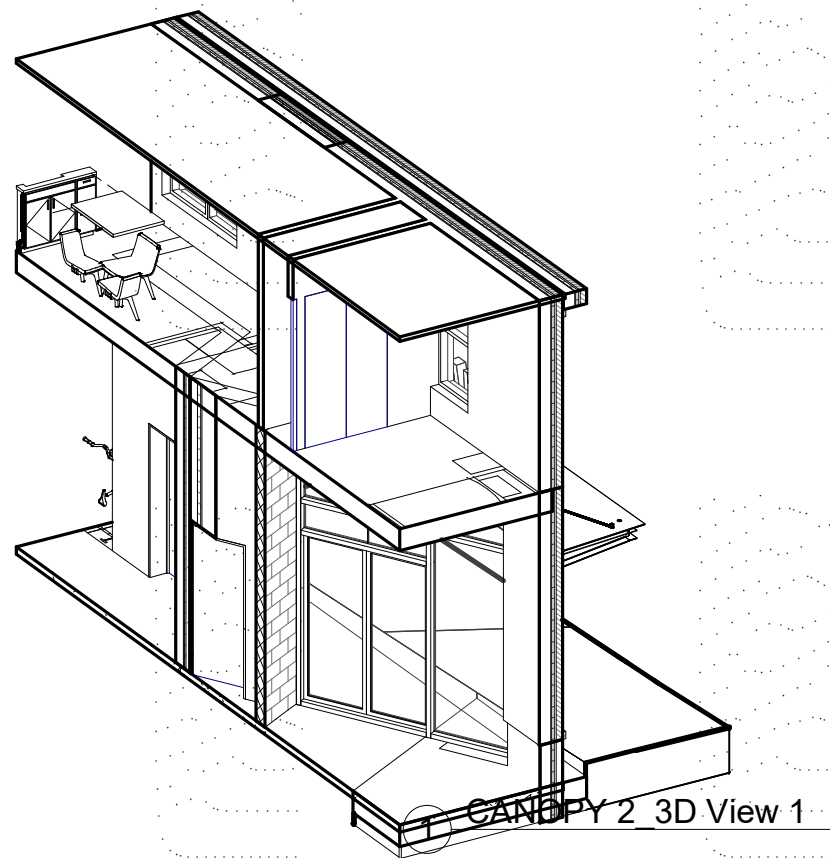
4 CANOPY 1 SECTION
1/4" = 1'-0"



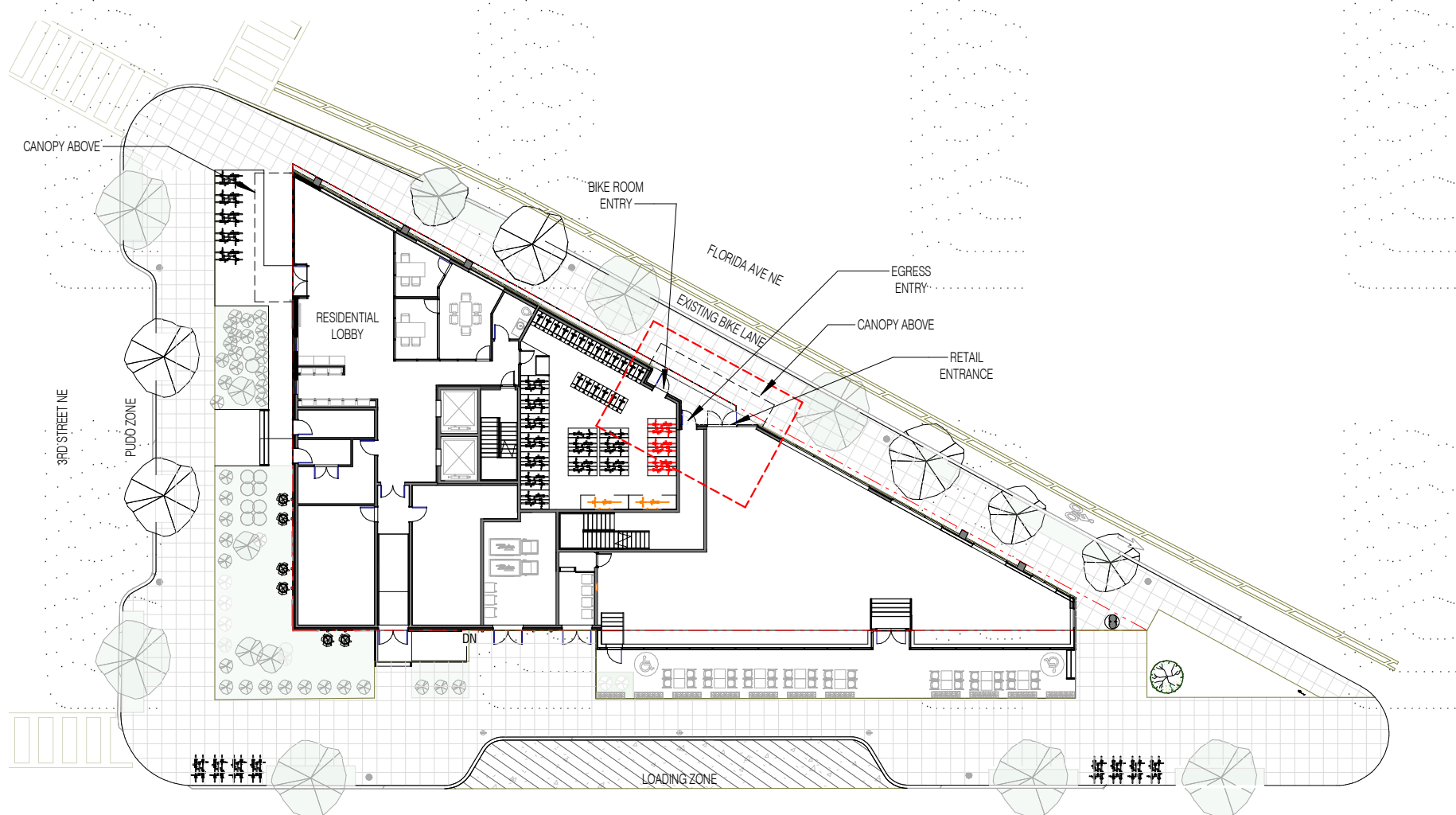
5 SIGNAGE DETAIL 2
1/4" = 1'-0"



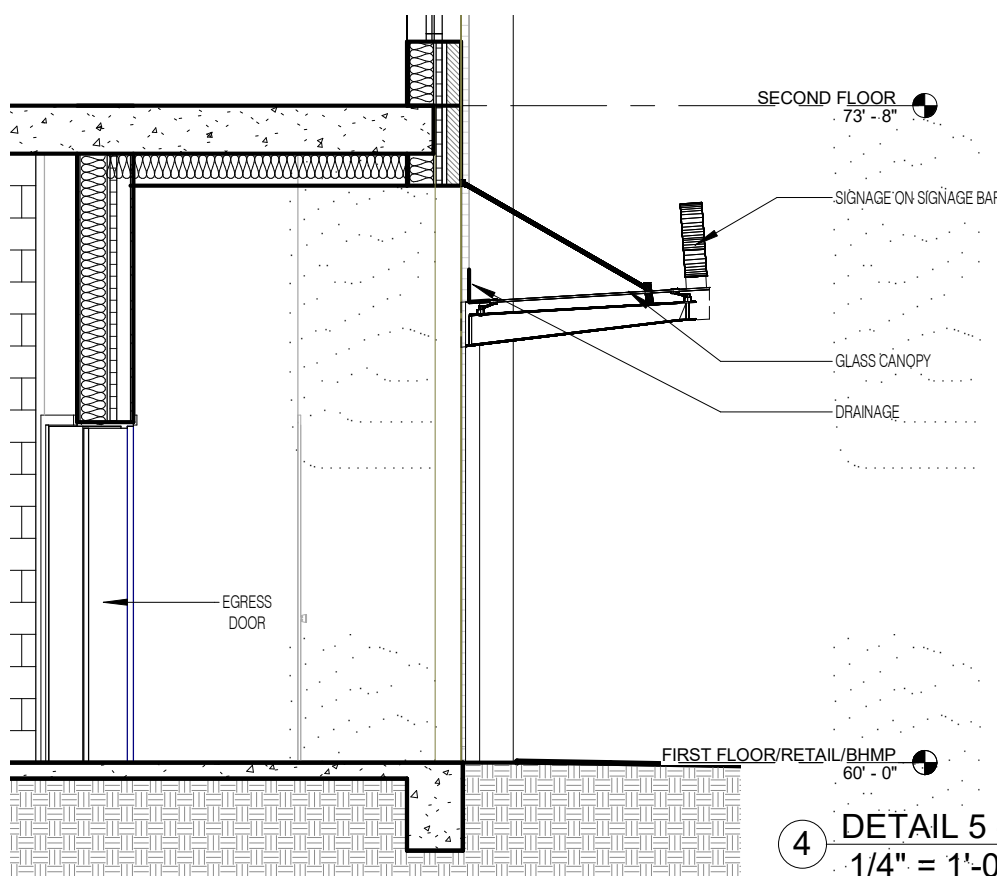
3 CANOPY 1 ELEVATION
1/8" = 1'-0"



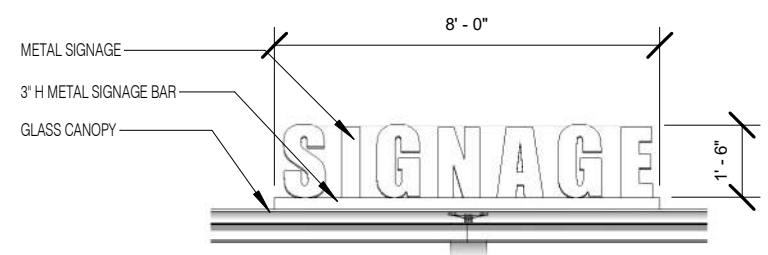
1 CANOPY 2 3D View 1



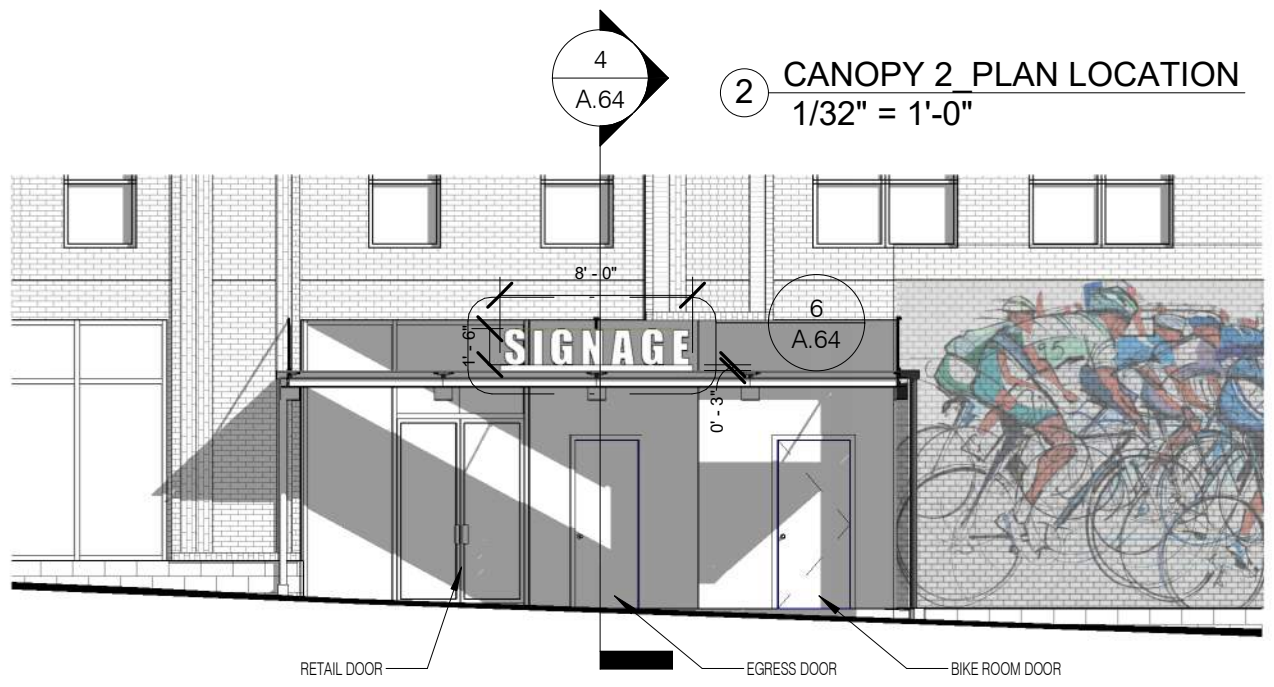
2 CANOPY 2 PLAN LOCATION
1/32" = 1'-0"



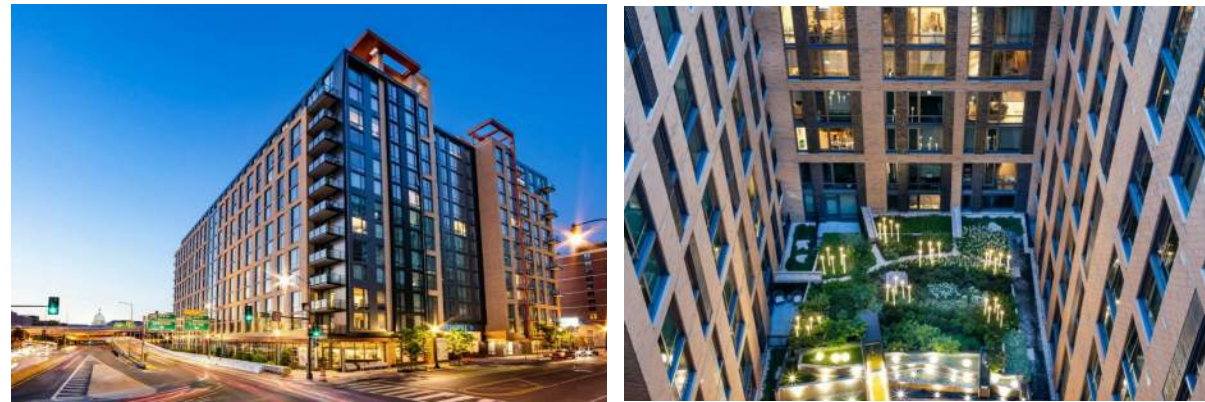
4 DETAIL 5 - SECTION
1/4" = 1'-0"



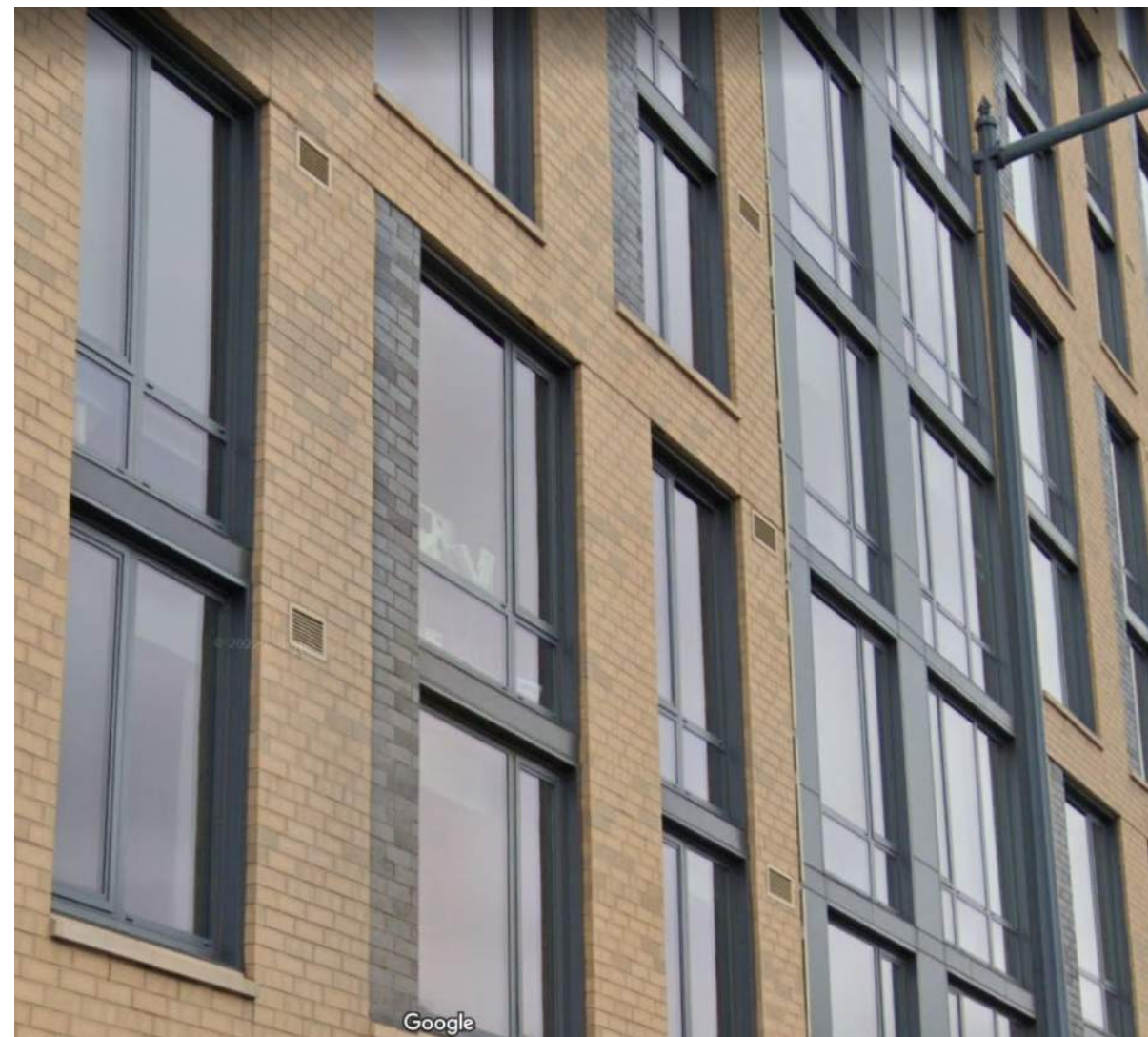
6 SIGNAGE DETAIL.
1/4" = 1'-0"



3 DETAIL 5 - ELEVATION
1/8" = 1'-0"



RECESSED VENT
EXAMPLE: NOVEL SOUTH CAPITOL, DC



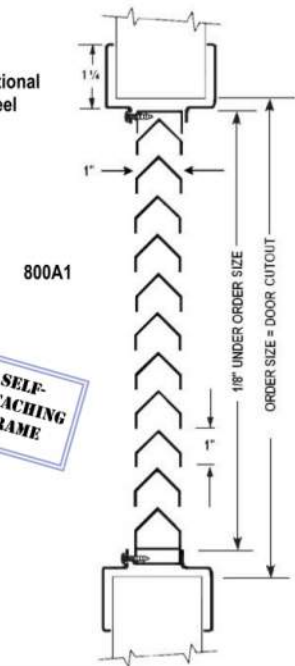
INVERTED Y-BLADE LOUVER: 800 SERIES

L5

Inverted "Y" Blades Recommended for Schools, Class "A" and Institutional Buildings.



800A1 in Optional
Stainless Steel
Finish



SPECIFICATIONS:

Material:	18 gauge CRS frame and 20 gauge blades. Min size 6" x 4", Max 48" x 80". Multiple sections can be combined for larger sizes
Construction:	Louvers: Inverted "Y" blades with 1" blade spacing are attached by interlocking construction to the 1" deep, welded frame. Non-vision. 800A1 Frame: 1-1/4" trim, mitered and welded corners. Screws fasten through frame into louver core, leaving corridor side of frame free of fasteners.
Door:	___ 1-3/4" Any Style. Door cutout = order size. ___ 1 3/8"-1 3/4" - 800CORE, 800C, 800A.
Mounting Options:	Select one mounting option from table below.
Fasteners:	Phillips head screws #8 x 3/4" to match finish.
Powder Coat Finishes:	___ (B) Mineral Bronze (std color) ___ (BK) Black ___ (FBK) Flat Black ___ (SI) Silver ___ (SB) SC Beige ___ (GH) Gray Hammertone ___ (S) Sand ___ (AB) AMS Beige ___ (G) Gray (A1 stock color) ___ (W) White ___ (R) Red Color Samples Online.
Free Flow Area:	50% free area.

SELF-
ATTACHING
FRAME

OPTIONAL FEATURES AT AN ADDITIONAL COST:

Finishes & Materials:	___ (S) 18 gauge frame and 20 gauge stainless steel, #4 finish ___ 16 gauge CRS ___ (J) Galvanneal sheet for exterior use and corrosion-resistance ___ (E) Electro Galvanized for corrosion resistance & exterior use
Fasteners:	___ Torx ___ Other: _____
Screen:	___ 18x14 mesh insect screen installed in roll-formed aluminum frame ___ aluminum ___ bronze ___ fiberglass ___ stainless ___ Bird Screen.
Custom:	Custom sizes, other door thickness, round frame, other options; Contact Customer Service.

DOOR MOUNTING OPTIONS - SELECT ONE

800A1: Self-attaching, vandal-proof design; basic blade unit with flanged frame welded to face (corridor) side and separate removable flanged frame on opposite side; fits 1-3/4" door only.	
800CORE: Basic blade unit only; for interior door or as transom louver held in place with wood or metal moulding (furnished by others); any size door.	
800C: Basic blade unit with single flanged frame welded to face (corridor) side. Wood or metal moulding (by others) used on opposite side; fits any size door.	
800A: Basic blade unit with flanged frame welded to face (corridor) side and separate flanged frame on opposite side; frame adjustable to fit any door thickness from 1-3/8" to 1-3/4".	

STOCK ITEM— 800A1 IN STOCK FOR NEXT DAY SHIPMENT
IN SEVERAL STANDARD SIZES FROM MOST WAREHOUSES

Order Format: 800
Example: 800A1 1212S A,A1,CORE,C Option S,J,E W H Color

 	Distributor:	Width: ___ x Height: ___
	Architect:	Quantity:
	Contractor:	Model:
	Project:	Date: Version: ALPDS1605
800-554-6077 QUOTES@ACTIVARCPG.COM ORDERS@ACTIVARCPG.COM SALES@ACTIVARCPG.COM FAX: 952-835-2218 VISIT WWW.ACTIVARCPG.COM FOR THE MOST UPDATED PRODUCT INFORMATION © ACTIVAR CONSTRUCTION PRODUCTS GROUP, INC 2016 MFG: COMMERCE CA, BLOOMINGTON, MN • WAREHOUSES: LANCASTER PA, ATLANTA GA, CHICAGO IL, SEATTLE WA, FORT MYERS FL, DALLAS TX		

RECESSED VENT LOUVER SPEC EXAMPLE



DECORATIVE IDEA ON BLANK BRICK WALL



① ENLARGED ELEV. (3RD)
1/8" = 1'-0"



② ENLARGED ELEV. (N ST)
1/8" = 1'-0"



* RENDERINGS ARE ILLUSTRATED PURPOSE ONLY AND SUBJECT TO CHANGE.

NoMA/Union Market Affordable

301 Florida Ave NE, Washington, DC 20002

RENDERING OF 3RD & N ST FACADE | A.71

COPYRIGHT © 2020 PGN ARCHITECTS, PLLC



08/22/2022



PGN ARCHITECTS